

21.11.20~12.10 トーナメント



Oil Pattern Distance: **45 Feet**
 Forward Oil Total: **12.96 mL**
 Forward Boards Crossed: **324 Boards**

Reverse Brush Drop: **45 Feet**
 Reverse Oil Total: **12.52 mL**
 Reverse Boards Crossed: **313 Boards**

Oil Per Board: **40 uL**
 Volume Oil Total: **25.48 mL**
 Total Boards Crossed: **637 Boards**

Start	Stop	Loads	Speed	Crossed	Start	End	Feet	T.Oil
1	3L 3R	1	10	35	0.0	0.0	0.0	1400
2	8L 8R	4	18	100	0.0	10.2	10.2	4000
3	9L 9R	3	18	69	10.2	17.8	7.6	2760
4	10L 10R	3	18	63	17.8	25.4	7.6	2520
5	11L 11R	3	22	57	25.4	34.7	9.3	2280
6	2L 2R	0	26	0	34.7	45.0	10.3	0

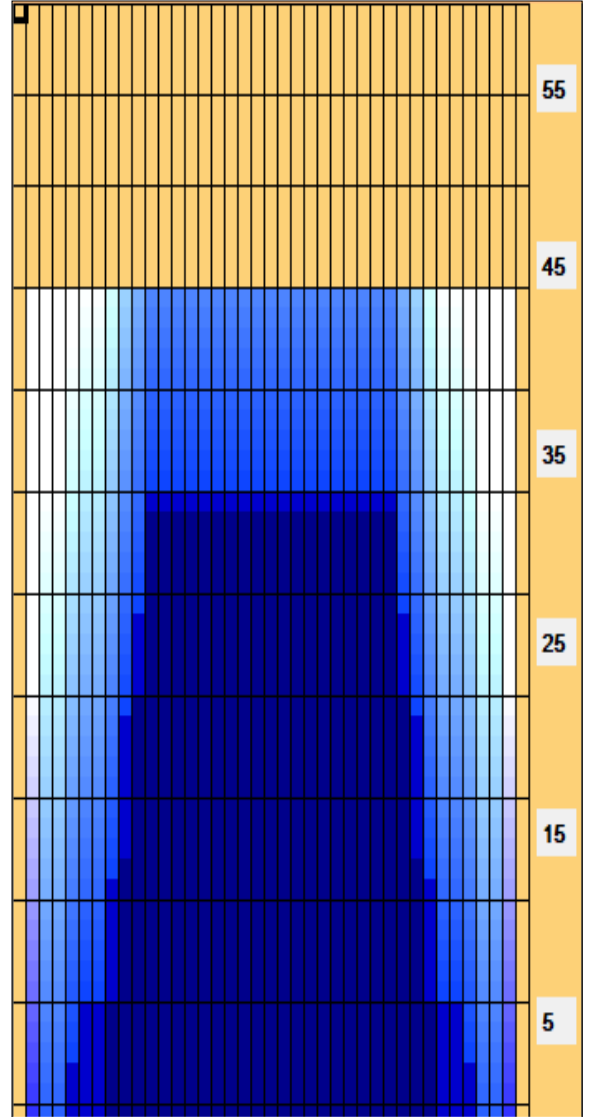
Navigation: Forward Reverse More

Start	Stop	Loads	Speed	Crossed	Start	End	Feet	T.Oil
1	2L 2R	0	26	0	45.0	35.0	-10.0	0
2	11L 11R	2	22	38	35.0	28.8	-6.2	1520
3	10L 10R	2	18	42	28.8	23.7	-5.1	1680
4	9L 9R	3	18	69	23.7	16.1	-7.6	2760
5	8L 8R	3	14	75	16.1	10.2	-5.9	3000
6	6L 6R	2	10	58	10.2	7.4	-2.8	2320
7	5L 5R	1	10	31	7.4	6.0	-1.4	1240
8	5L 5R	0	10	0	6.0	0.0	-6.0	0

Navigation: Forward Reverse More

Conditioner:
Type In or Select One
 TransferType:
Type In or Select One

- Forward
- Reverse
- Combined
- Buff



Item	3L-7L:18L-18R	8L-12L:18L-18R	13L-17L:18L-18R	18L-18R:17R-13R	18L-18R:12R-8R	18L-18R:7R-3R
Description	Outside Track:Middle	Middle Track:Middle	Inside Track:Middle	Middle: Inside Track	Middle:Middle Track	Middle:Outside Track
Track Zone Ratio	11.25	1.3	1	1	1.3	11.25

