

# 2022.4.16~ トーナメント



Oil Pattern Distance: **41 Feet**  
 Forward Oil Total: **13.92 mL**  
 Forward Boards Crossed: **348 Boards**

Reverse Brush Drop: **41 Feet**  
 Reverse Oil Total: **10.04 mL**  
 Reverse Boards Crossed: **251 Boards**

Oil Per Board: **40 uL**  
 Volume Oil Total: **23.96 mL**  
 Total Boards Crossed: **599 Boards**

Start	Stop	Loads	Speed	Crossed	Start	End	Feet	T.Oil
1	3L 3R	1	10	35	0.0	0.0	0.0	1400
2	5L 5R	2	10	62	0.0	2.8	2.8	2480
3	7L 7R	3	10	81	2.8	7.0	4.2	3240
4	9L 9R	3	14	69	7.0	12.9	5.9	2760
5	11L 11R	2	14	38	12.9	16.8	3.9	1520
6	13L 13R	2	18	30	16.8	21.9	5.1	1200
7	15L 15R	2	22	22	21.9	28.1	6.2	880
8	15L 15R	1	26	11	28.1	31.7	3.6	440
9	15L 15R	0	30	0	31.7	41.0	9.3	0

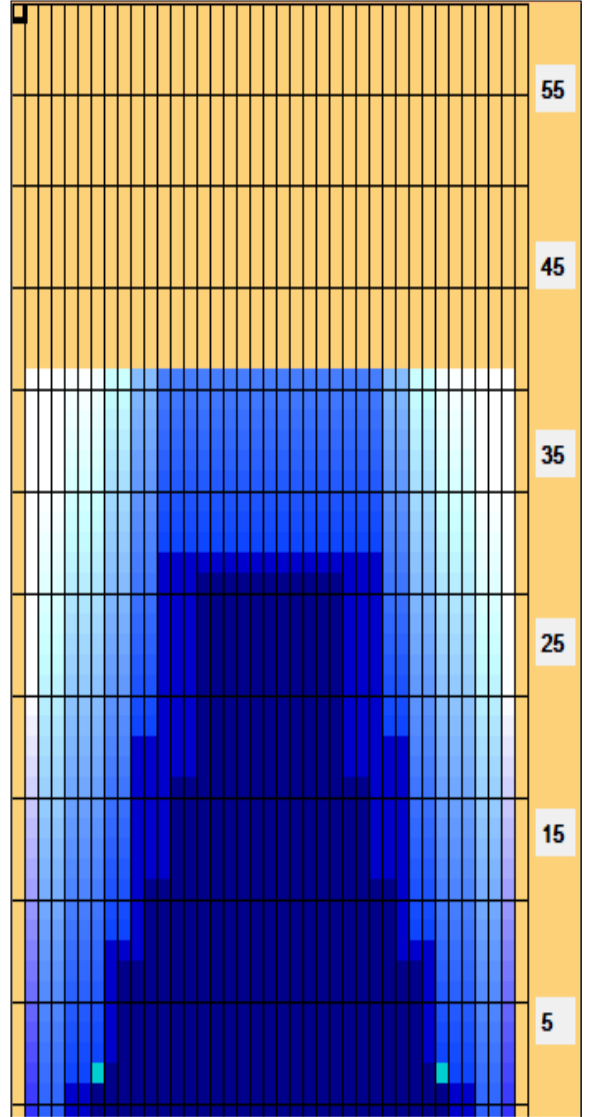
Navigation: Forward Reverse More

Start	Stop	Loads	Speed	Crossed	Start	End	Feet	T.Oil
1	2L 2R	0	30	0	41.0	32.0	-9.0	0
2	12L 12R	3	22	51	32.0	22.7	-9.3	2040
3	10L 10R	3	22	63	22.7	13.4	-9.3	2520
4	8L 8R	3	18	75	13.4	5.8	-7.6	3000
5	5L 5R	2	10	62	5.8	3.0	-2.8	2480
6	2L 2R	0	10	0	3.0	0.0	-3.0	0

Navigation: Forward Reverse More

Conditioner:  
Type In or Select One  
 TransferType:  
Type In or Select One

- Forward
- Reverse
- Combined
- Buff



Item	3L-7L:18L-18R	8L-12L:18L-18R	13L-17L:18L-18R	18L-18R:17R-13R	18L-18R:12R-8R	18L-18R:7R-3R
Description	Outside Track:Middle	Middle Track:Middle	Inside Track:Middle	Middle: Inside Track	Middle:Middle Track	Middle:Outside Track
Track Zone Ratio	6.75	1.63	1.05	1.05	1.63	6.75

